

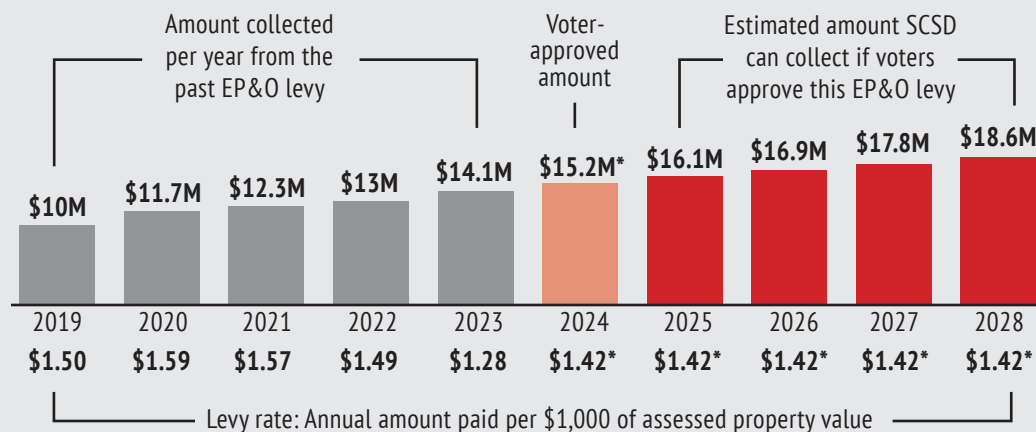
# REPLACEMENT LEVY INFO

EDUCATIONAL PROGRAMS & OPERATIONS LEVY • ELECTION DAY IS FEBRUARY 13, 2024

## Why ask voters to replace this existing levy?

State and federal dollars do not fully fund the day-to-day operations of our local schools. The district relies on local taxpayers to help fund more than 16% of its annual budget.

Without the levy funding, the district would need to cut its budget. And because staffing costs are nearly 90% of the budget, positions would be in jeopardy of being eliminated.



## Voters approve the maximum levy amount the school district can collect

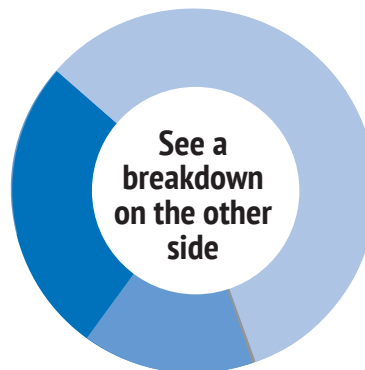
Importantly, school districts can only collect a set amount of money approved by voters. So if your property values increase, the rate is adjusted to ensure the district collects what was approved by voters for that year.

\* ESTIMATED

## What will this levy pay for?

Levy dollars help pay for staffing and operations that are unfunded – or underfunded – by the state, including all of our sports funding, most safety and security personnel, and many other staffing costs such as teaching, nursing, and counseling.

Money from the levy will help to lower class sizes by bridging the ongoing state funding gap between what the state funds and what it actually costs to deliver on our commitment to offer each student a quality education, clean and safe environments for learning, and resources for well-being.



If voters approve this levy, the school district's total tax rate including all levies and bonds will be lower than it was in 2022, before the Facilities and Tech levy expired.

	2022	2025
Bond	\$1.22	\$1.00
EP&O	\$1.49	\$1.42
Tech	\$0.24	\$0
Total*	\$2.95	\$2.42

# \$59

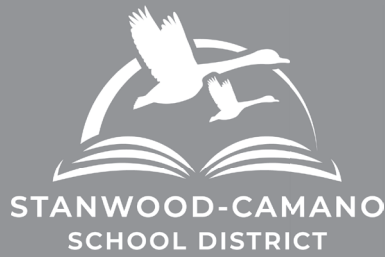
The EP&O's levy's estimated cost per month for the owner of a \$500,000 home

# +300

Student enrollment in our district has increased from about 4,400 in 2014 to about 4,700 in 2023

\* Rate per \$1,000 of assessed property value

Learn more at [www.stanwood.wednet.edu/levy](http://www.stanwood.wednet.edu/levy)

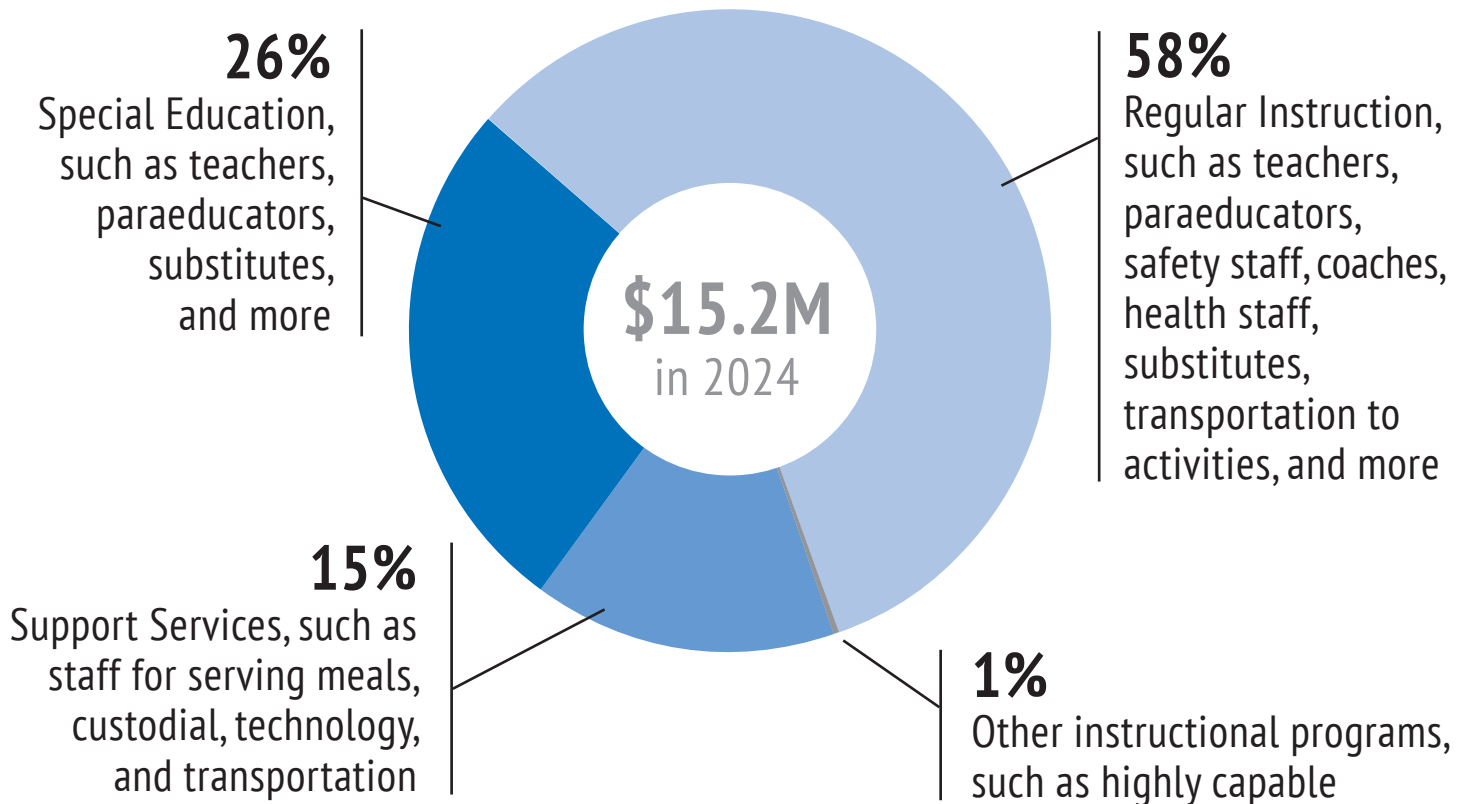


# REPLACEMENT LEVY INFO

EDUCATIONAL PROGRAMS & OPERATIONS LEVY • ELECTION DAY IS FEBRUARY 13, 2024

## Breaking down what this levy pays for

Most of this levy would pay for staff to maintain class sizes, to offer services the state doesn't consider "basic education," and to support our students. Below is an estimated breakdown of where the levy dollars are forecast to be spent to supplement underfunding by the state.



### Athletics

The levy funds the entirety of the district's General Fund spending on athletics and activities – as the state does not consider these part of "basic education."

### Safety

The levy also pays for the district's student supervision and security staff. The state provides very little funding for safety and security services.

### Staff

Levy dollars are used for staff in each and every school building in our district, including teachers, nurses, paraeducators, counselors, and more.

Learn more at [www.stanwood.wednet.edu/levy](http://www.stanwood.wednet.edu/levy)